

Skylark RTK Setup Guide for the AFS Pro 700

Revision 1.0

2022-11-16

Overview

The following provides details on how to configure your AFS Pro 700 to operate with Swift Navigation's Skylark RTK NTRIP-based corrections.

For an overview of getting started with Skylark RTK and what exactly NTRIP is and its elements, refer to [Getting Started with Skylark RTK \[8837-1.0\]](#).

To use Skylark RTK corrections, you must complete the following tasks.

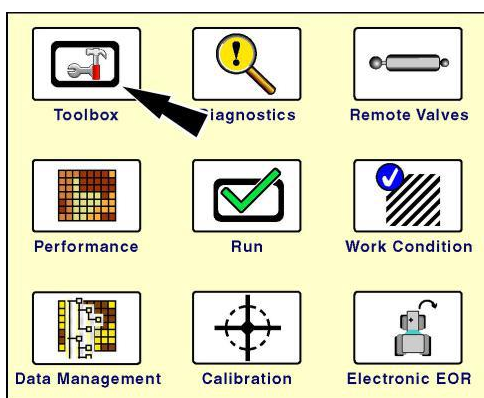
- Access the GNSS setup screen
- Select RTK as your correction type
- Enter all the NTRIP details for Skylark RTK operation

Follow the procedures in the sections below to complete these three tasks.

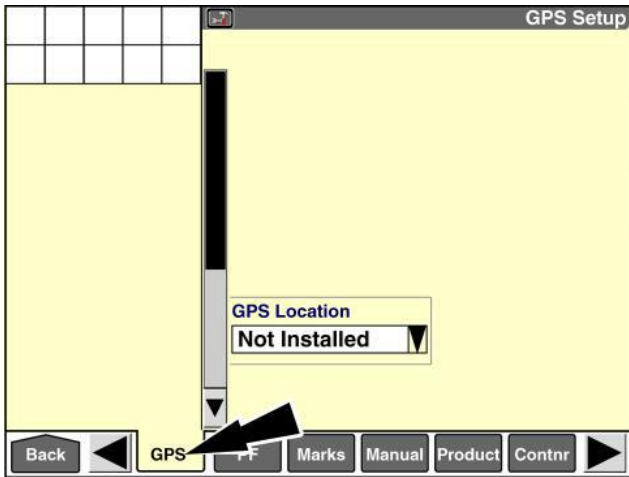
Accessing GPS Setup

Follow the steps below to access the GPS setup screen.

1. On the "Home" screen, click the "Toolbox" icon to access the "Toolbox" screens.



- Click the “GPS” icon on the navigation bar to display the “GPS Setup” screen.



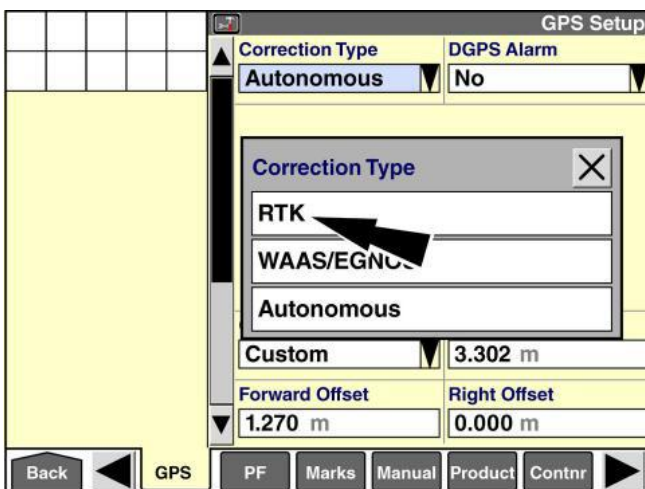
You have now accessed the GPS Setup screen and completed this procedure.

Selecting Your Correction Type

- Use the “Correction Type” window to select the DGPS correction technology that is in use.

Note: The pop-up options window only includes the types of correction signal that have been activated for your receiver. The “Autonomous” option (no correction) and the “WAAS/EGNOS” option are available without activation. Other options display only if they are activated.

- Select “RTK” as your “Correction Type”.



You have now set the Correction Type as RTK and completed this procedure.

RTK Setup

After you have selected RTK as your Correction Type, use the open “Correction Level” window to establish how the vehicle receives the RTK correction signal. The possible options are:

- “AgGPS Radio”
- “DCM-300/Ag3000”

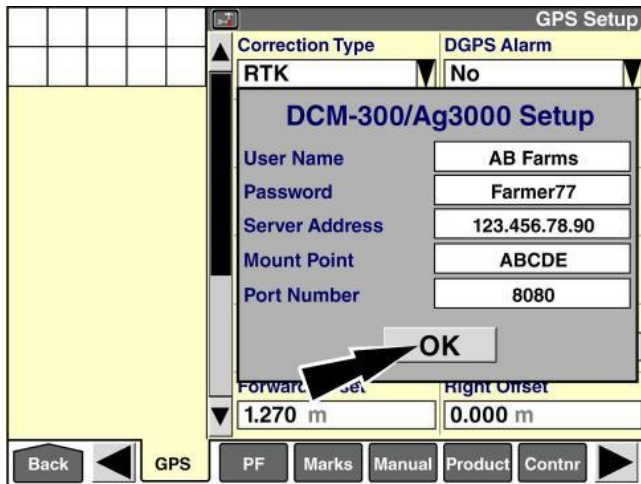
Follow the procedure below to complete RTK setup.

- 1) Click the “Correction Level” window to access the pop-up options window.
- 2) Select “DCM-300/Ag3000” for your “Correction Level” option.

Note: The modem must be properly installed in the vehicle cab per the instructions that accompany the unit.

- 3) Click the “OK” button to clear any informational windows.
- 4) Click the “Edit” button in the “RTK Source Setup” window to access the “DCM-300/Ag3000 Setup” pop-up window.

This is where you will enter the Swift Skylark RTK NTRIP details to access the Skylark RTK corrections.



- 5) Enter the following content to access Skylark RTK correction service:
 - a) User Name: Enter the username provided to you when you signed up for Swift’s Skylark RTK correction service.
 - b) Password: Enter the password provided to you when you signed up for Swift’s Skylark RTK correction service.

-
- c) **Server Address:** This is the NTRIP “End Point”; enter “na.l1l2.skylark.swiftnav.com”.
- d) **Mount Point:** This is the format of the corrections. For Skylark RTK, you have two options to choose from:
- i) RTK-MSM5
 - ii) RTK-RTCM31

Which you use depends on what your connected RTK GNSS receiver supports. Newer receivers support RTK-MSM5 while older receivers support RTK-RTCM31. If you are not sure, select RTK-RTCM31.

- 6) Click the “OK” button to save the values to the display’s memory.

You have now set up the RTK and completed this procedure.

Revision History

Version	Date	Changes since Last Version
1.0	2022-11-16	Creation