

Skylark RTK Setup Guide for the AgLeader GeoSteer

Revision 1.0

2022-11-15

Overview

The following provides details on how to configure your AgLeader GeoSteer, when using an Integra or Versa display, to operate with Swift Navigation's Skylark RTK NTRIP-based corrections.

For an overview of getting started with Skylark RTK and what exactly NTRIP is and its elements, refer to [Getting Started with Skylark RTK \[8837-1.0\]](#).

To use Skylark RTK corrections, you must complete the following tasks.

- Access the GPS setup screen
- Select NTRIP RTK as the correction source
- Enter all the NTRIP details for Skylark RTK operation

Follow the procedures in the sections below to complete these three tasks.

Access the GPS Setup Screen

Follow the procedure below to access the GPS setup screen.

1. Tap the setup icon as shown below.



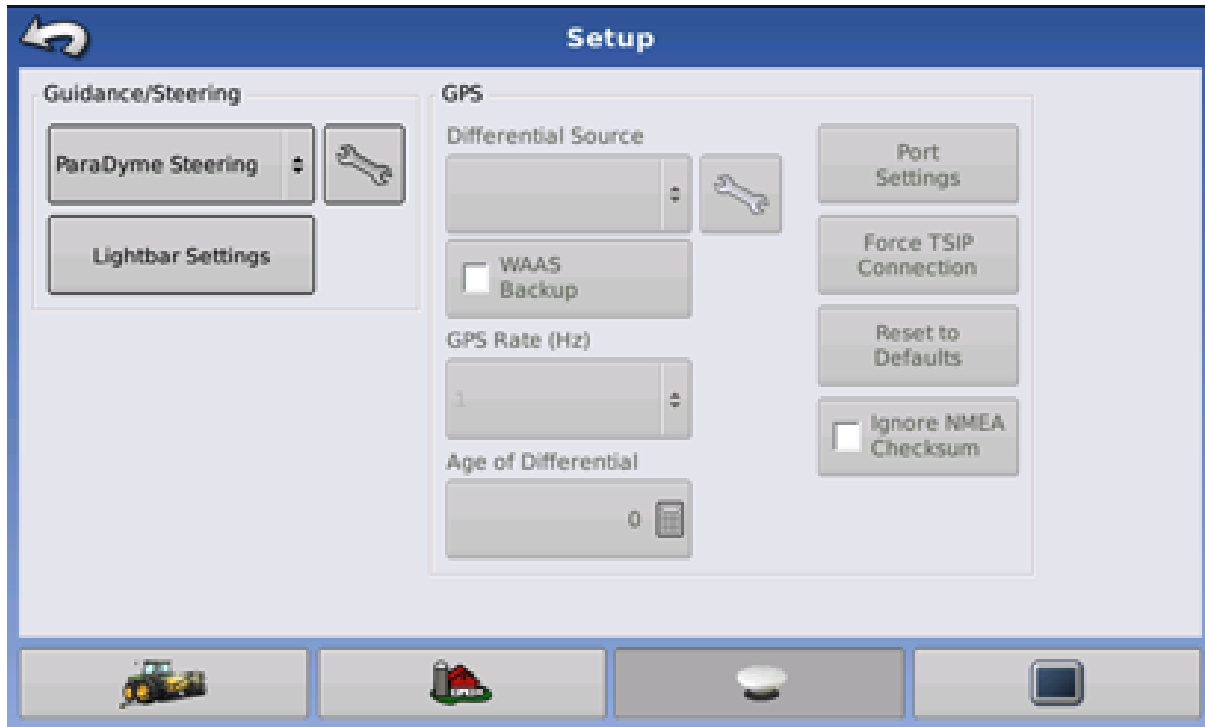
Setup icon

2. Select the GPS/Guidance Setup tab shown below.



GPS/Guidance Tab

The Setup screen opens as shown below.



3. Press the Setup button as shown below.



Setup Tab

4. Select the GPS tab to access all GPS and NTRIP setup options.



The AutoSteer GPS Setup window is now open and you can proceed with setting up NTRIP RTK in the next procedure.

Setting NTRIP RTK as the Differential Source

Follow the steps below to set NTRIP RTK as the differential source.

1. In the AutoSteer Setup screen, after selecting the GPS tab, tap the NTRIP button.



2. Select the Profile button to create an NTRIP account.
3. Select New Connection from the Select Profile list.
4. Press the Add button to add a new profile.



5. Press the Edit button to the right of the Server field.
6. Enter the IP address of the server. For Swift Skylark RTK this will be:
na.1112.skylark.swiftnav.com
7. Press the green check mark button to save the value (or the red X button to cancel).
8. Press the Edit button to the right of the Port field.
9. Type in the Port value and then press the Green Check Mark to save the value or the Red X to cancel.
10. For Swift Skylark RTK this will be:
2101
11. Press the Blue Right Arrow to move to the next step

The GeoSteer system connects to the Internet and then downloads the available NTRIP Streams. The available options for Swift Skylark RTK are:

- RTK-MSM5
- RTK-RTCM31

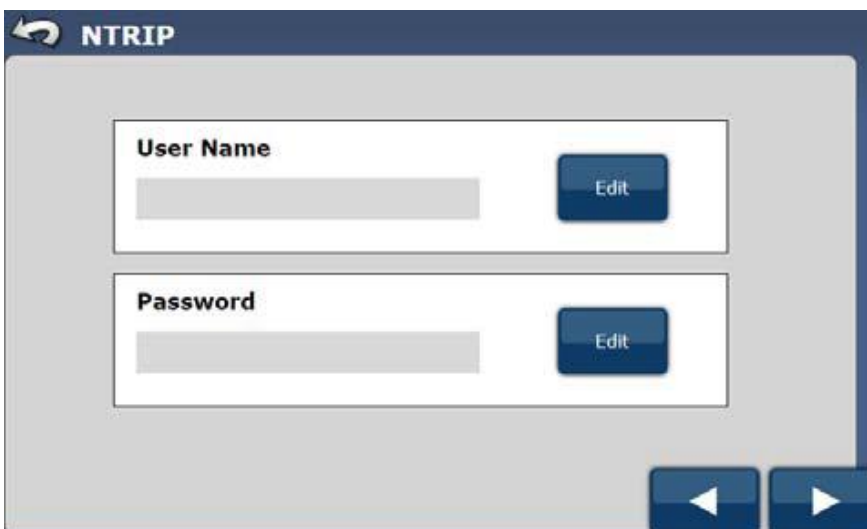


- Use the Gray Up/Down Arrows or directly select the stream to use from the list.
- Press the blue right-arrow to continue to the next procedure, providing NTRIP details including your Skylark RTK username and password.

Providing the NTRIP Details

After setting the Differential Source as RTK External, you can configure the NTRIP details to access the Swift Skylark RTK NTRIP correction service. Follow the procedure below to do so.

Following the previous procedure, the NTRIP User Name/Password window is active.



1. Press the Edit button in the User Name section.

2. Type in your username.

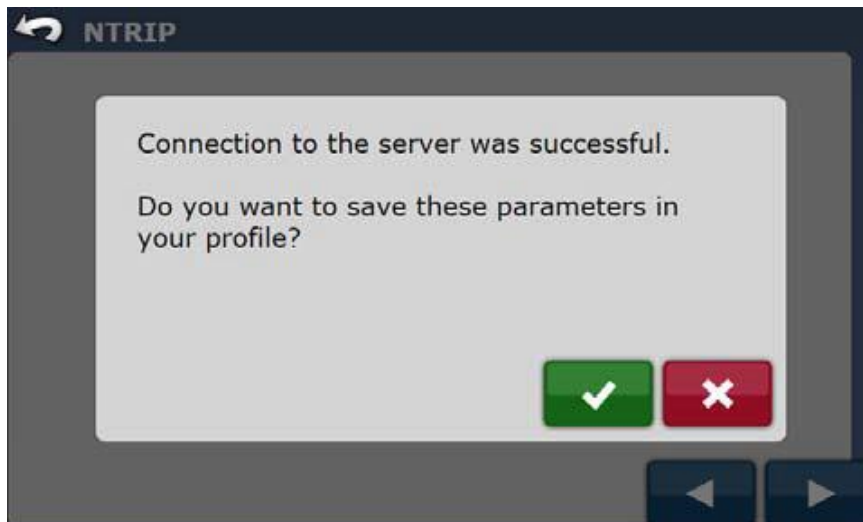
Note: The User Name and the Password were provided to you when you sign up for Swift's Skylark RTK correction service.

3. Press the Edit button in the Password section.

4. Type in the password for the username you entered.

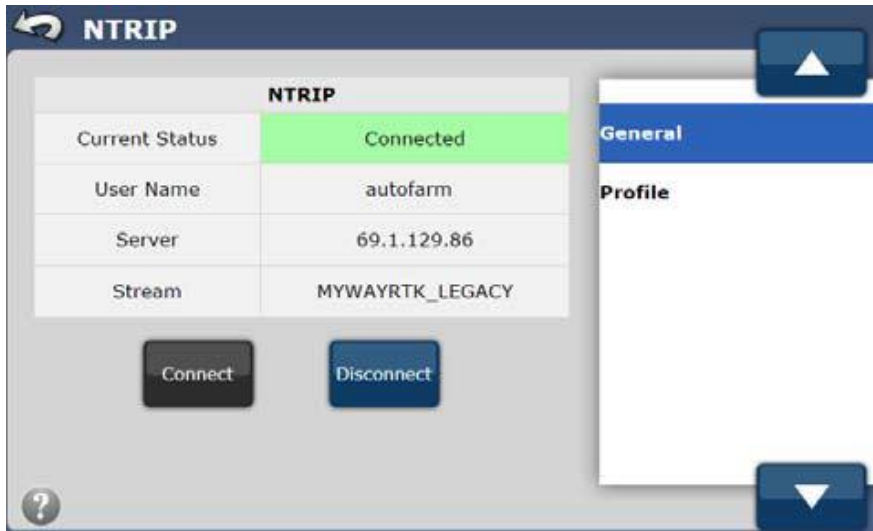
5. Press the blue right-arrow to continue to the next screen.

A Connection Successful note displays as shown below.



6. On the Connection Successful screen, press the green checkmark button to save the profile (or the red X button to cancel).

The new Profile is saved and the screen returns to the General tab and shows the system is now connected.



You have now provided the necessary NTRIP details and are configured to receive Skylark RTK corrections.

Revision History

Version	Date	Changes since Last Version
1.0	2022-11-15	Creation