

Skylark RTK Setup Guide for the AgLeader InCommand

Revision 1.0

2022-11-15

Overview

The following provides details on how to configure your AgLeader InCommand display to operate with Swift Navigation's Skylark RTK NTRIP-based corrections.

For an overview of getting started with Skylark RTK and what exactly NTRIP is and its elements, refer to [Getting Started with Skylark RTK \[8837-1.0\]](#).

To use Skylark RTK corrections, you must complete the following tasks.

- Set NTRIP RTK as the Differential Source
- Enter all the NTRIP details for Skylark RTK operation

Follow the procedures in the sections below to complete these three tasks.

Setting NTRIP RTK as the Differential Source

1. Click the Setup icon.



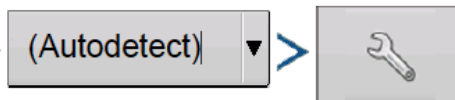
2. Click the GPS/Guidance Setup tab.



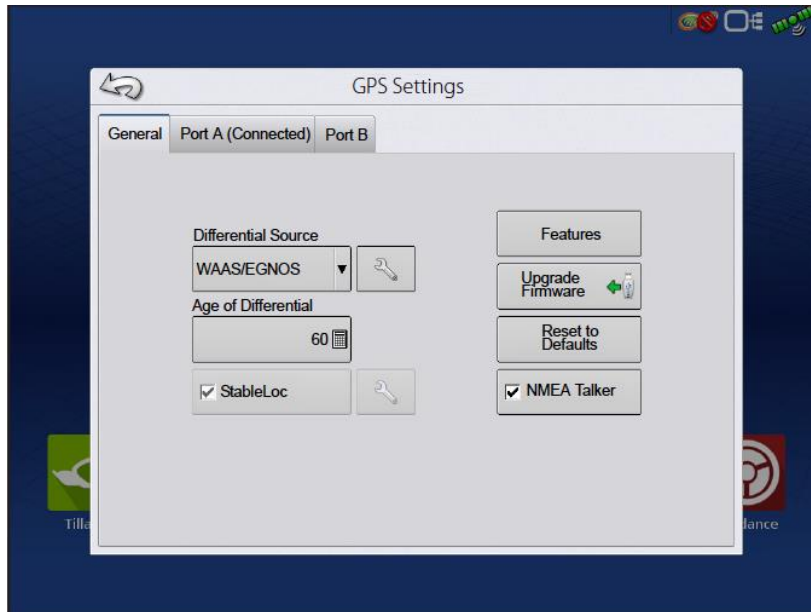
3. The GPS/Guidance Setup window opens.



4. Click the wrench icon to the right of the Receiver selection button.



5. The GPS Settings dialog opens.



6. Click the Differential Source drop-down list and select "RTK External".
7. Click the Go Back Arrow button at the top-left to return to the main GPS/Guidance Setup window.

Providing the NTRIP Details

After setting the Differential Source as RTK External, you can configure the NTRIP details to access the Swift Skylark RTK NTRIP correction service. Follow the procedure below to do so.

1. Click the Setup icon.

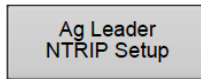


2. Click the GPS/Guidance Setup tab.

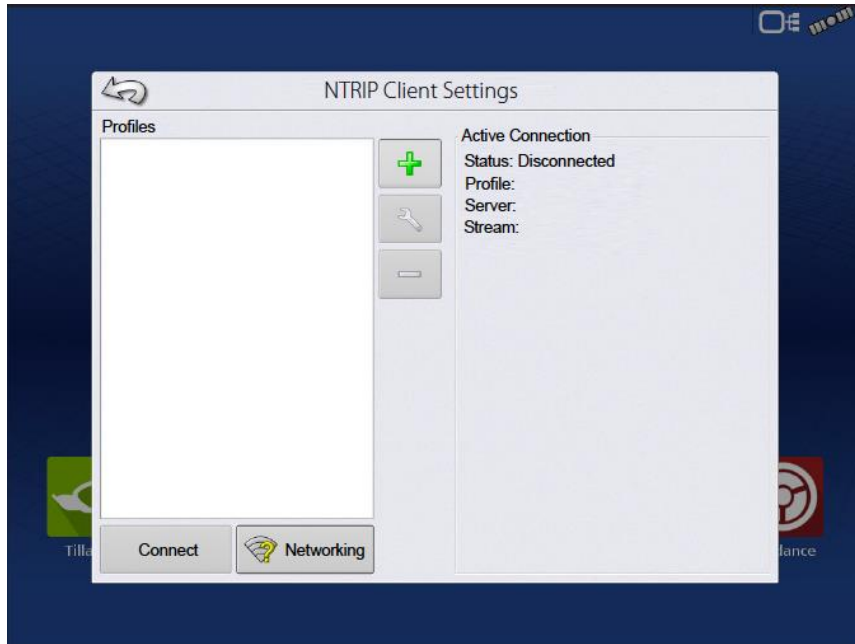


The GPS/Guidance Setup window opens.

3. Click the Ag Leader NTRIP Setup button.

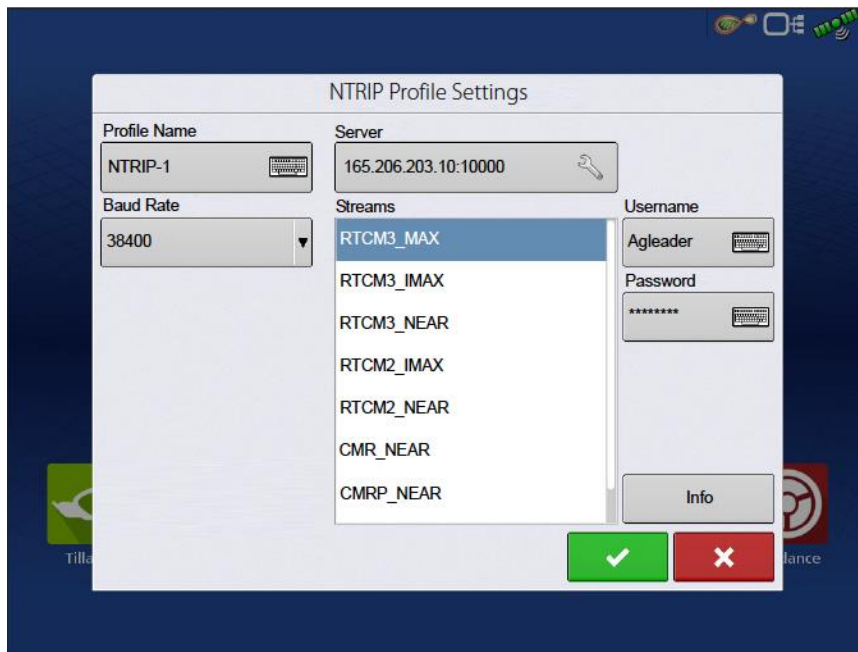


The NTRIP Client Settings dialog opens.



4. If an NTRIP Profile does not yet exist, create a new one by clicking the Plus icon, to which you can add the necessary configuration information.
5. Select the newly created NTRIP Profile.

The NTRIP Profile Settings dialog opens.



6. Enter the following NTRIP details:

- a. Server: the NTRIP “End Point” as well as the NTRIP port for the Skylark RTK service. For Skylark RTK, enter “na.l112.skylark.swiftnav.com:2101”.
- b. Streams: the format of the corrections. For Skylark RTK, you have two options:
 - i. RTK-MSM5
 - ii. RTK-RTCM31

Which stream to select depends on what the connected RTK GNSS receiver supports. Newer RTK GNSS receivers support RTK-MSM5 while older receivers support the RTK-RTCM31 format. If you are not sure, select the RTK-RTCM31 format.

- c. Username: the username provided to you when you signed up for Swift’s Skylark RTK correction service.
- d. Password: the password provided to you when you signed up for Swift’s Skylark RTK correction service.

7. Click the Check Mark button to save all the changes.

You have now provided the necessary NTRIP details and are configured to receive Skylark RTK corrections.

Revision History

Version	Date	Changes since Last Version
1.0fa	2022-11-15	Creation